

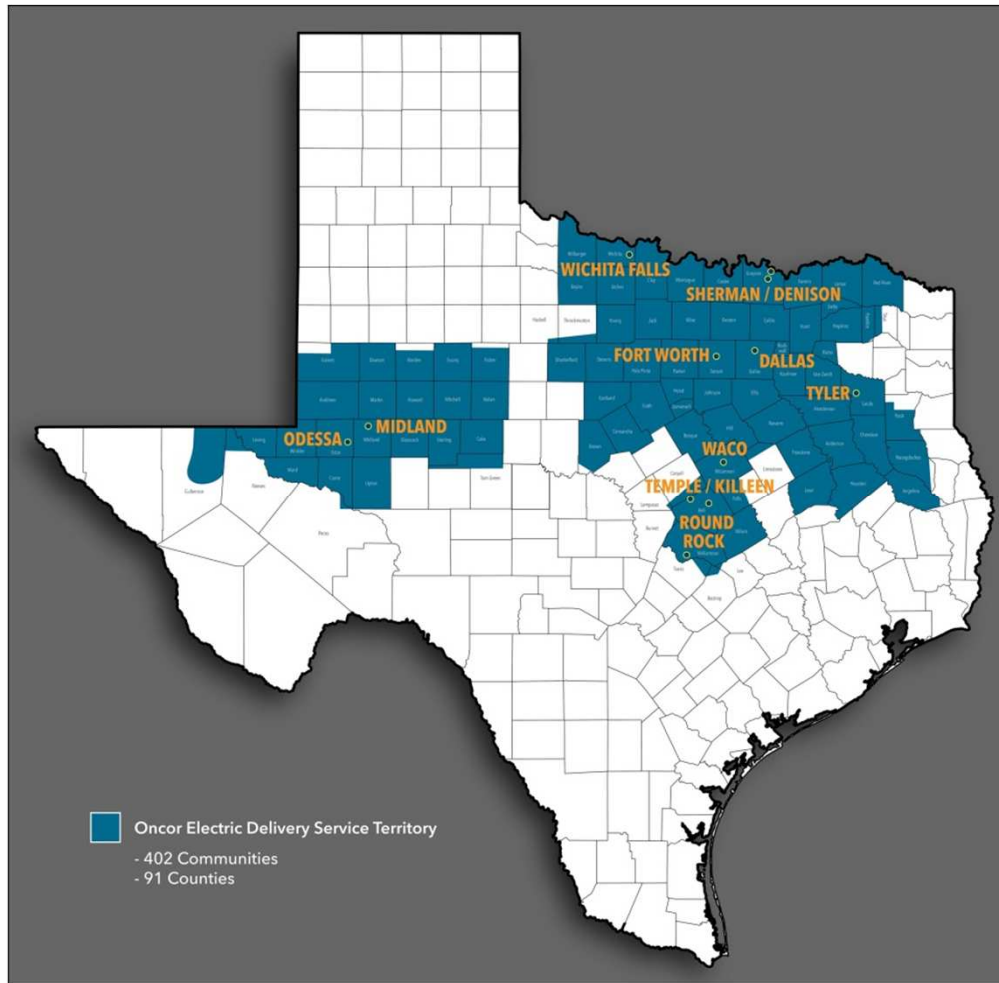


Center of Excellence for Practical Big Data Analytics at Oncor

Power Zhao Younus Mulla
Oncor Big Data Analytics CoE Team

August, 2018

Oncor – By the Numbers



3.4M

AMS Meters

122k

T&D
Circuit Line Miles

500k

Switch Points

250k

SCADA
Points

1.5 B

SCADA
X-actions / month

60 TB

New Data
Records/month

250 TB

Current EDW
Data storage

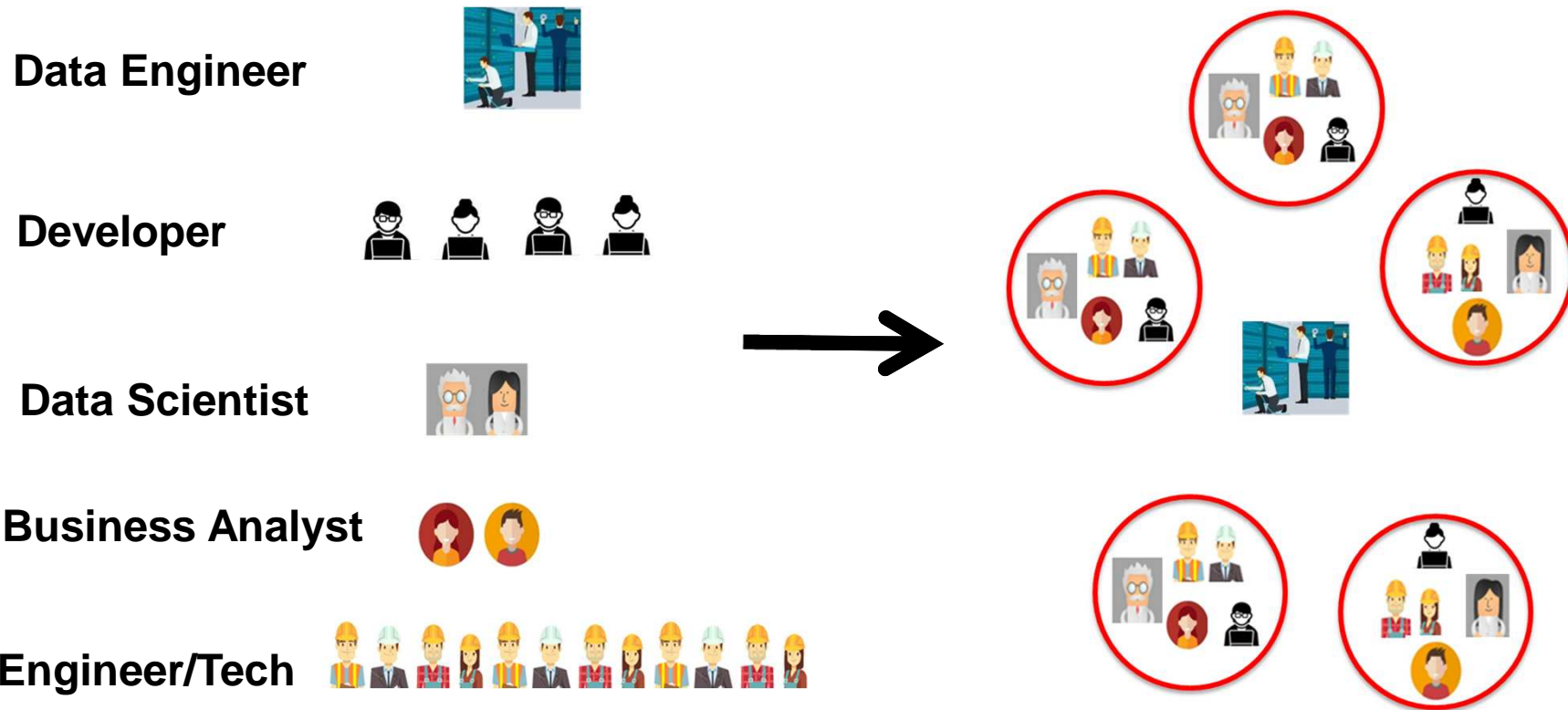
Outlines

- **Oncor Data Analytics Current State and Platform**
- **Build Center of Excellence for Data Analytics at Oncor**
- **Use Case Examples**

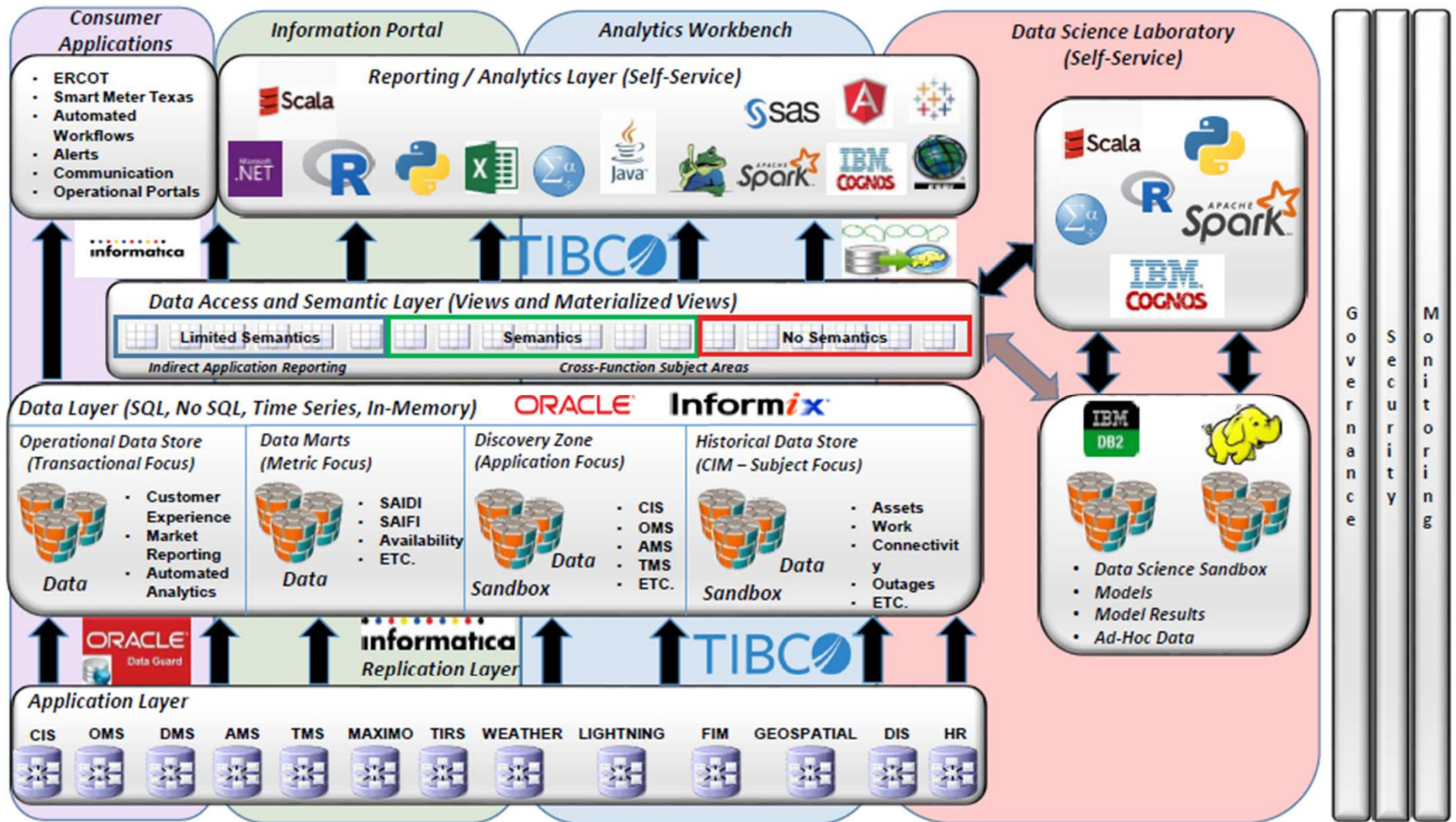


Oncor Data Analytics Current State and Platform

Use Case Driven Analytics Team Work



A more expanded view of Oncor's Analytics Platform





Build Center of Excellence (CoE) for Data Analytics at Oncor

Oncor CoE for Data Analytics



- Support and educate multiple organizations' key business objectives
- Establish enterprise-wide definitions, calculations, business rules
- Encourage “self-service” analytic models and reporting for business
- Define data analytics directions and technologies for better business outcomes

Oncor CoE for Data Analytics

--- Focus Areas

- Business Strategy Alignment
- Best Practices and Standards
- Advise and Consult
- Technical Architecture
- Training and Support
- Data Governance Alignment

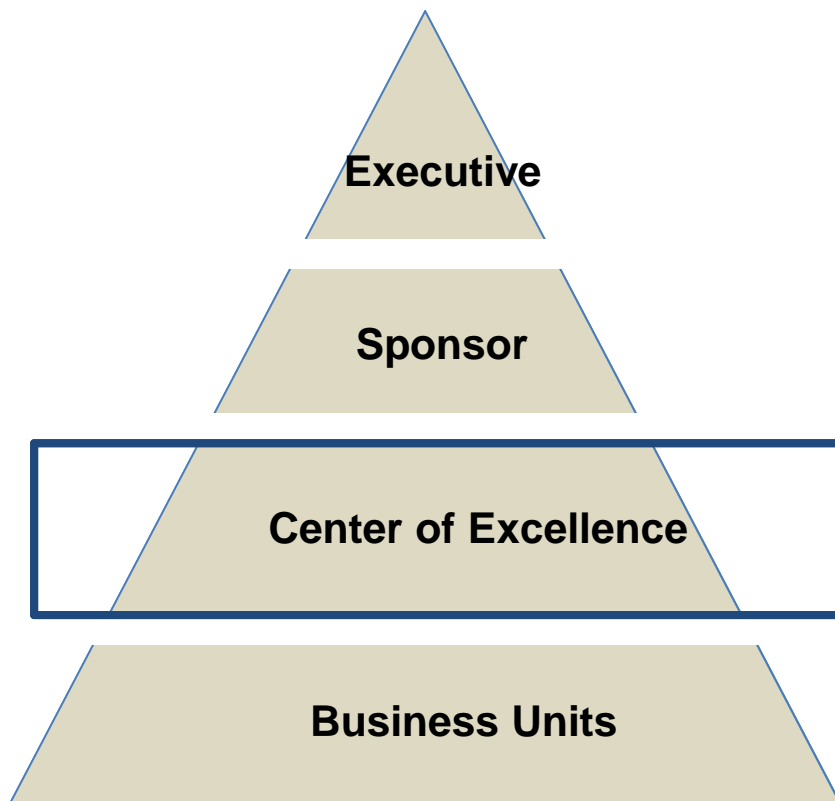
Oncor CoE for Data Analytics

--- Key Factors

- People
 - Create virtual teams and corresponding role maps
 - Cultivate a data and decision science practice
 - Encourage people to develop cutting edge skills
- Process
 - Develop analytics oriented BI architecture
 - Develop data quality process
 - Develop best practices
 - Review and revise processes regularly
- Technology
 - Assess the business needs
 - Engage vendors to build POC for the business case
 - Architect the solution to promote self service

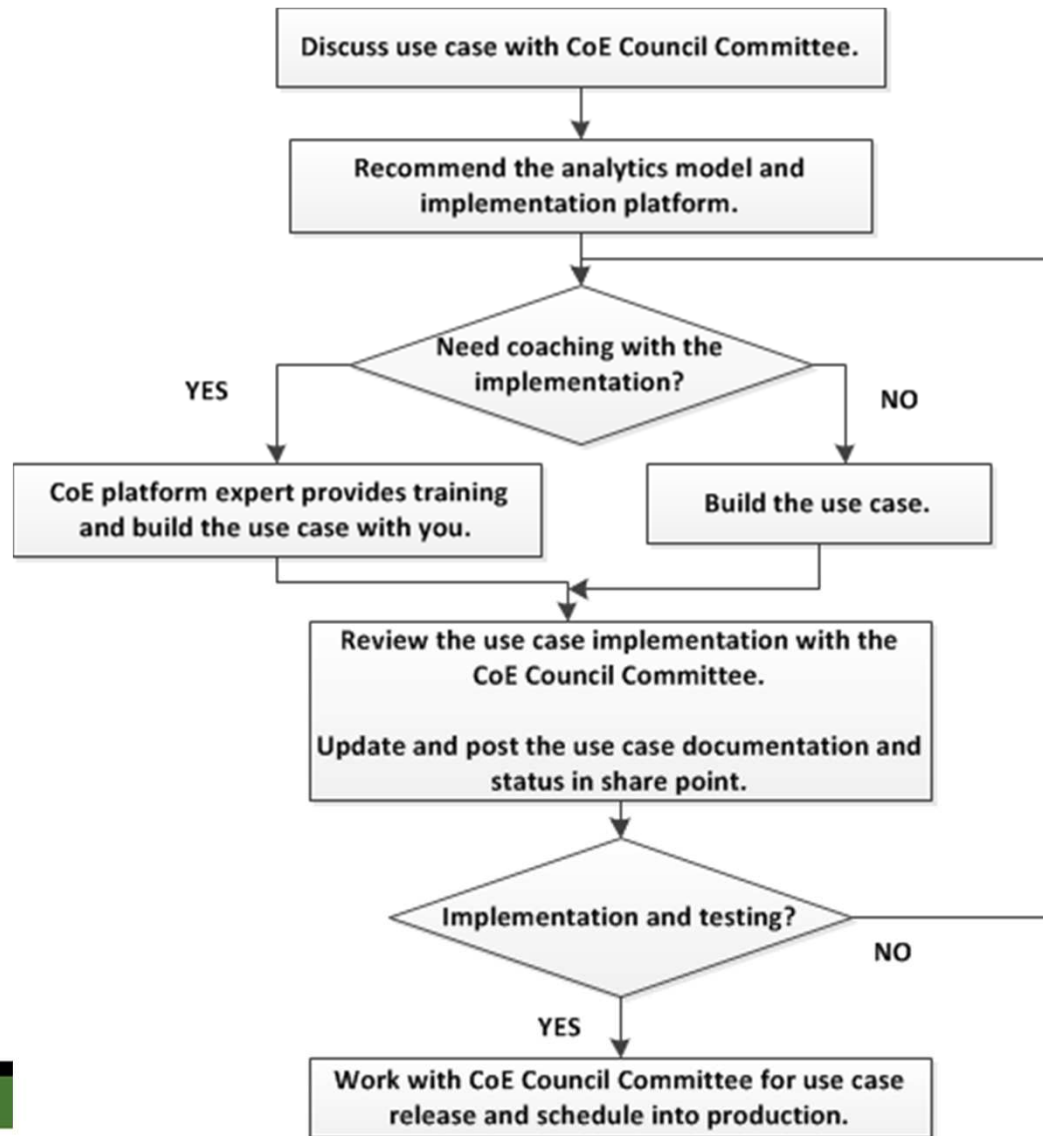
Oncor CoE for Data Analytics

-- Structure

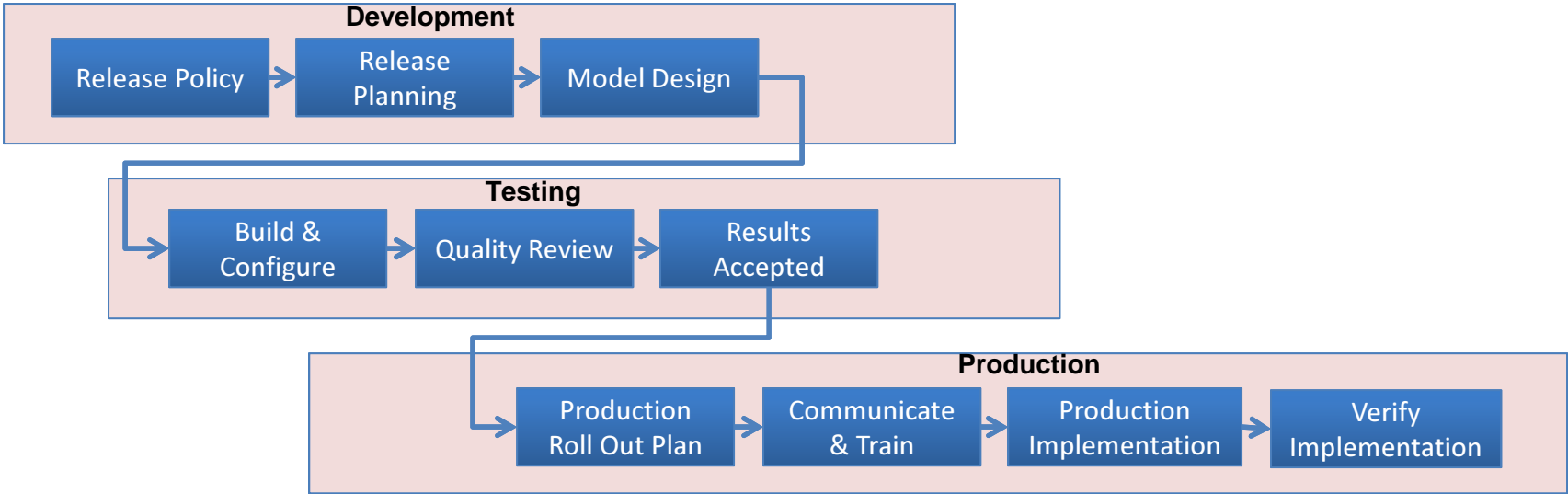


- **Committee Chairs**
- **Committee Experts**
 - Data Science
 - Data Management
 - SPARK Implementation
 - SPSS Implementation
 - R Implementation
- **Committee Secretary**

Oncor CoE for Data Analytic -- Implementation Process



Production Release Process and Governance



Change Management Process



Use Case Examples

Implemented Use Cases at Oncor

- [SPARK] Meter-Transformer Connectivity Errors Detection
- [SPARK] Distribution Transformer Load Forecast & Over Load Detection
- [R] Feeder Load Forecast
- [SPSS] Prediction of Weather-Related Damage in Distribution System
- [SPSS] AMS Based SAIDI Calculation
- [SPSS] Non-Technical Losses Detection
- [SPARK] Distribution Transformer Phase Error Detection
- ...



Thank You!

qing.zhao@oncor.com
Younus.Mulla@oncor.com